

SPECIFICATION

Specifications

General Name	Vacuum Infiltration Processor	
Product Name	Tissue-Tek VIP 6 AI	
Model	VIP6-AI-A1	VIP6-AI-E2
Product Code	6040	6042
Voltage	115VAC+/-10%	230VAC+/-10%
Frequency	50/60 Hz	50/60 Hz
Current	12.0 amps	6.0 amps
Dimensions	606 (W) x 675 (D) x 1329 (H) mm	
Weight	Approximately 175 kg	
Process Capacity	Up to 300 tissue-Tek Uni-Cassettes	
Reagent Compatibility	Formalin (including NBF), Tissue-Clear, Methanol, Ethanol, IPA, Xylene, Toluene, Paraffin, Water	
Reagent reservoirs	13 bottles; up to 4.2 L (including condensate and cleaning)	
Paraffin reservoirs	3 small: up to 4.2 L 1 large: up to 5.6 L	
External bulk reservoirs	2 reservoirs, 10 L each	
Level sensors	4, ultrasonic	
Display	10.4 inch, color LCD, touch screen	
Fume control	Fume condenser system and Fume Filters	
Environmental Requirements	Operating Temperature: 10-40 °C Relative Humidity: 30-85% (non-condensing) Atmospheric Pressure: 70-106 kPa	

Standard Accessories

Product Number	Description	Quantity
A4-01-0534 A4-01-0542	Power Cord 115 VAC Power Cord 230 VAC	1
F60-492-00	Paraffin Reservoir, Small	3
F60-493-00	Paraffin Reservoir, Large	1
F60-499-00	Paraffin Waste Container with Lid	1
D8-93-0145 (6045)	Paraffin Waste Bags	12/case
D9-80-0119	Anti-adhesion sheet	1
F60-500-00 (6035)	Complete Reagent Bottle	12
A-M079-U050-00-A	Condensation Bottle	1
O70-411-00	Spare reagent Bottle	1
B4-00-0000 (7109)	Basket Transport Tray	1
F60-288-00 (6160)	Fume Filter	2/case
F60-024-00 (5265)	Cassette Baskets with Dividers and Handles*1	2
F60-025-00 (5267)	Cassette Baskets with Dividers*2	2
F60-027-00 (5269)	Basket Hook for Basket*2	1
F60-529-00 (6036)	Reagent Bottle Labels	1set
External Drain/ Fill Hoses	F61-061-00 For Drain/Fill	1
	F61-059-00 For Bulk Reservoir (Right)	1
	F61-060-00 For Bulk Reservoir (Left)	1
F60-584-00	External Drain and Fill Hose Clip	1
A3-60-4499	USB Memory	1
D9-06-0801 (1550)	Paraffin Scraper, Large	1
D9-06-0509 (6034)	Paraffin Scraper, Small	1
00000-0016	Level Sensor Cleaning Brush	1
O70-626-00 (6163)	Screen Protection Sheet	1
	Operating Manual	

* 1 Only for VIP6-AI-A1 * 2 Only for VIP6-AI-E2

Optional Items

F60-532-00	Mounting Plate, Exhaust Duct	1
F60-536-00	Duct Hose Set (38 mm OD)	1
F60-537-00	Duct Hose Set (75 mm OD)	1
	Tissue-Tek iSupport	

Tissue-Tek VIP® 6 AI
Vacuum Infiltration Processor

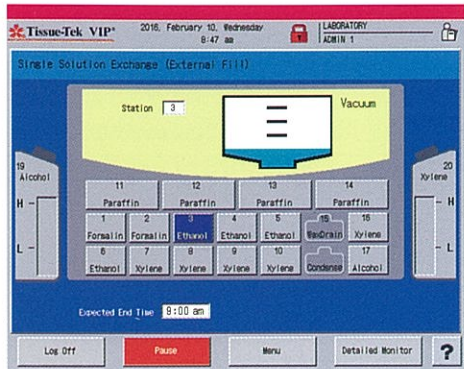
Confidence in Gold Standard Technology



The Next Level of Reliability and Safety from the Gold Standard

Advanced tissue processing

Tissue Processing



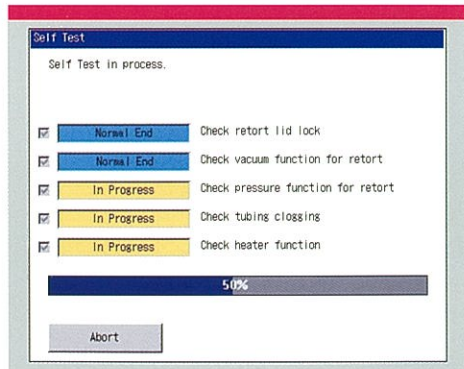
Advanced Infiltration (AI)

- 10 user-selectable reagent agitation modes offer effective yet gentle agitation for enhanced infiltration
- Onboard mixing of alcohol and xylene from the bulk reservoirs yields superb processing of fatty tissues
- Up to 50 user-defined programs enables comprehensive tissue processing for all tissue types



Tissue Safety

- The Solution Manager safeguards tissues during operation for safe and worry-free processing
- The 2 bulk reservoirs provide fresh reagent (if needed during process) to eliminate under-fills
- An automatic bottle check prevents issues BEFORE they happen by verifying reagent bottle connections prior to the start



Reliability

- A mean time between repairs of > 52 weeks leads the industry in reliability
- New Tissue-Tek® iSupport™* allows remote monitoring of errors to increase instrument uptime
- A newly designed manifold utilizes two reagent sensors to even further enhance reliability

* Please contact Sakura local distributor or Sakura Finetek Japan for more information.

Convenience

- Automatic Transfer allows for in-process solution rotation to significantly save time
- An LED-lit reagent cabinet enables quick visual observation of solution levels
- Automatic rotation of paraffin into the paraffin waste container saves time and prevents spills

