



GrossPath GP-1500

Special Worktable
**with active-carbon
air recirculation system**



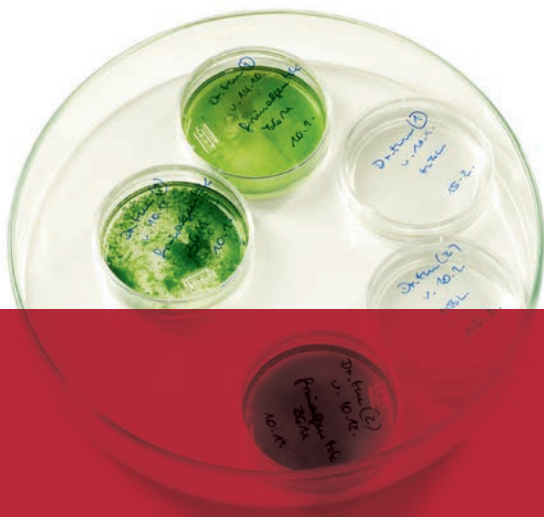
Plug in and work!

GrossPath – the special worktable designed to ensure a pollution-free, laboratory-grade working environment for slicing and preparing histological slide preparations. Its compact design makes the **GrossPath Special Worktable** the perfect laboratory equipment, especially for small facilities.

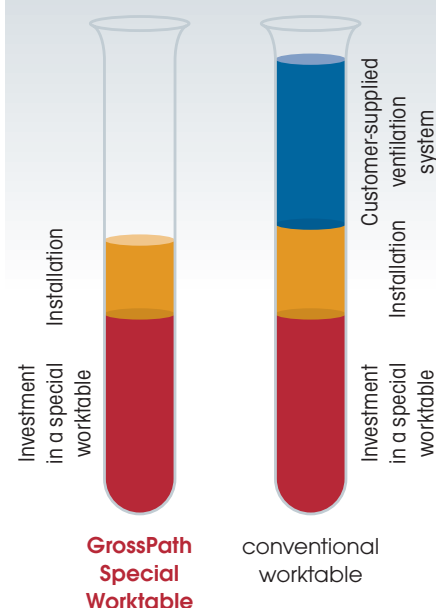
As a product of our **ECOLine** range, this worktable has been designed with a special view to conserving energy and resources – while delivering outstanding extraction results.

Buy it, set it up and power it on: thanks to its generously proportioned **active-carbon air recirculation system**, the **GrossPath Special Worktable** is ready for immediate use – no need for installing a costly separate air ventilation system! The air is suction-extracted off the entire work surface from top to bottom – for optimized removal of any health-hazardous vapors. Formalin concentrations will even be significantly below the maximum allowable concentrations (MAC) throughout the entire extraction zone.

Long service life guaranteed thanks to the **GrossPath's** large-sized special active-carbon filter – for significant savings in operating costs. Filters can be replaced with ease and comfort through a large inspection hatch in the table's understructure.

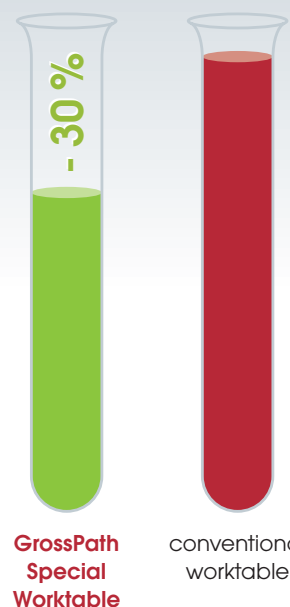


Investment costs

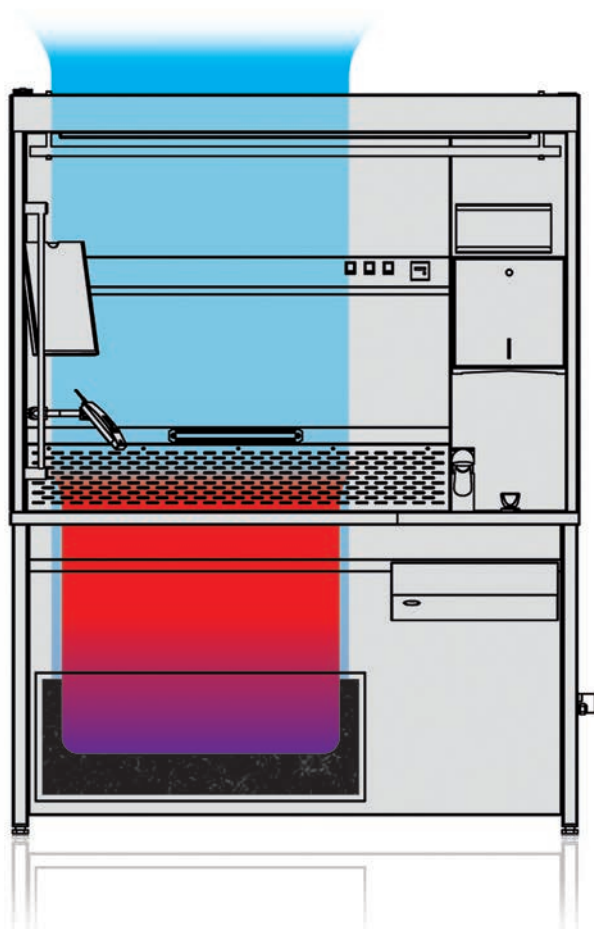


The investment costs involved in the installation of a customer-supplied ventilation system are significantly higher than the costs required for a stand-alone solution.

Operating costs



Significant reduction in operating costs of up to 30 % by obviating the need for conditioning outside air supply.



3 The purified air is blown out through the air duct

1 The contaminated air is drawn in by a high-performance extraction fan

2 The drawn-in air is purified by an active-carbon filter

Technical advantages and details of the GrossPath GP-1500 Special Worktable:

- Dual workstation with extra-large work surface
- Structure made entirely of highly-polished stainless steel (material code no. 1.4301 – ANSI 304)
- Stationary lighting assembly providing „daylight quality“ conditions (approx. 5000° K) – for direct shooting without need of additional flashlight
- 230-Volt dual socket integrated in the lighting assembly
- Solid, self-supporting understructure with adjustable legs
- Lateral rod system for accommodating document holders or Dictaphone brackets (optional*)
- Railing system for easy installation of a variety of holders or brackets e.g. camera tripod or magnifying glass with embedded light (optional*)
- Seamlessly welded 370 x 370 x 150 mm sink
- Mixer tap with pull-out rinsing hose
- Extra-sturdy perforated metal sheet inserts (approx. 10 mm below rim level), D17, T60 perforation
- Integrated exhaust-air connection with volume flow control
- Air velocity at the perforated metal sheet inserts: 0,4 m/sec min.
- Integrated sprinkler system installed underneath the perforated metal sheet inserts, including regulating valve
- Formalin drain with strainer screen insert
- Exhaust air duct blowing from bottom to top
- **New:** optional electro-hydraulic height adjustable from 850 mm to 1050 mm

**Not included in the standard scope of delivery.*



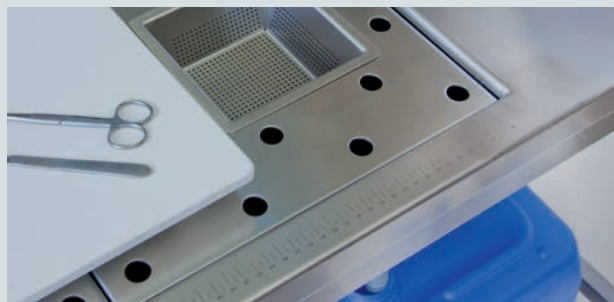
Flexible microphone holder FHH-SS-300



Magnet rail MS-300



Flexible scanner holder FH-SCAN-SS-300



Ruler at the worktable LIN-UCS



Paper dispenser made of stainless steel K-300
Medical glove dispenser HHK-UCS-1



Monitor holder MT-SET-BEA
Keyboard holder THS-SS



Camera holder KA-H-400

Technical Data

| | |
|--------------------------------|--|
| Dimensions table W/D/H: | 1500 x 800 x 850/1950 mm |
| Dimensions illumination W/D/H: | 1500 x 300 x 1100 mm |
| Exhaust air capacity: | approx. 750 m³/h |
| Material: | stainless steel (1.4301 – ANSI 304) |
| Perforated working area: | approx. 960 x 670 mm |
| Cold/Warm water connection: | DN 15 |
| Waste water connection: | DN 50 |

Pictured accessories optional –
not included in the standard scope of delivery.

Subject to technical modifications as required
by products improvements (Version 05/2011)

Product Overview

Gross-Path GP-1500

Article-No.: 060.205.100

Height adjustment for Gross-Path GP-1500

Article-No.: 069.900.205

Active-carbon filter

Typ: AKF-700-750/200

Article-No.: 060.260.016

KUGEL
medical

KUGEL medical GmbH & Co. KG
Hermann-Köhl-Straße 2 ADE-93049
Regensburg Germany
Phone +49/9 41/20 86 48-0
Fax +49/9 41/20 86 48-29
E-mail info@KUGEL-medical.de
www.KUGEL-medical.de

UNI BRAND INTERNATIONAL
Flat No 104, Mohammadia Plaza,
College Road, Rawalpindi Pakistan.
Tel : +92-51-5534794, 5541767, 5557602
Fax : +92-515555392
Cell : +92-345-5577591
Lahore (Cell): +92-345-8568214

Rawalpindi Lahore Karachi